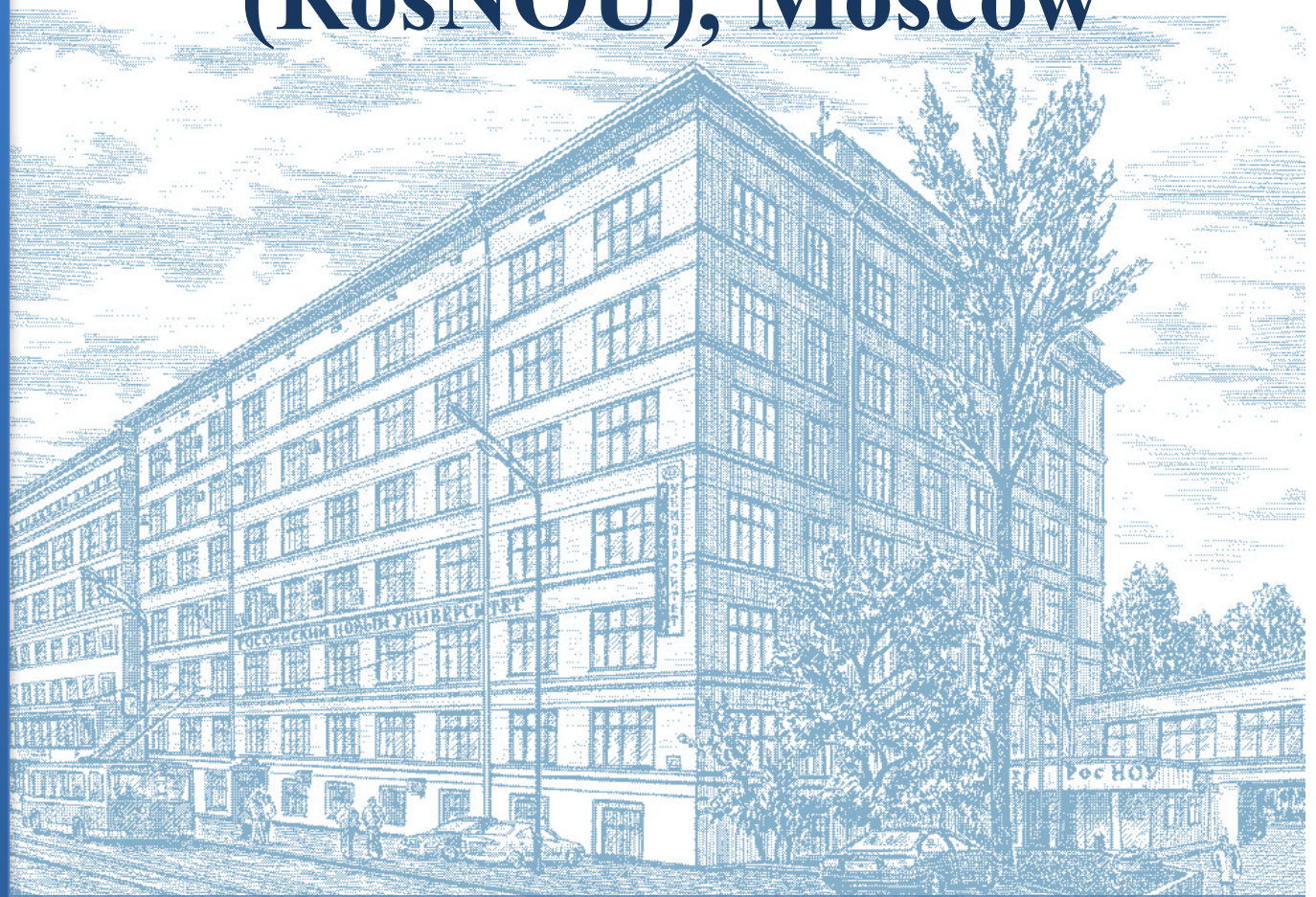


# RUSSIAN NEW UNIVERSITY (RosNOU), Moscow



Established  
1991

[www.rosnou.ru](http://www.rosnou.ru)



2017

# INTERNATIONAL AFFAIRS AND ACADEMIC MOBILITY DIRECTORATE



Established  
1991

[www.rosnou.ru](http://www.rosnou.ru)

## INTERNATIONAL

**GEORGE A. GABRIELIAN**

Director for International Affairs and Academic  
Mobility

05 September 2017

*The educational concept of RosNOU is dedicated to developing principles of open, universal, and innovative knowledge.*

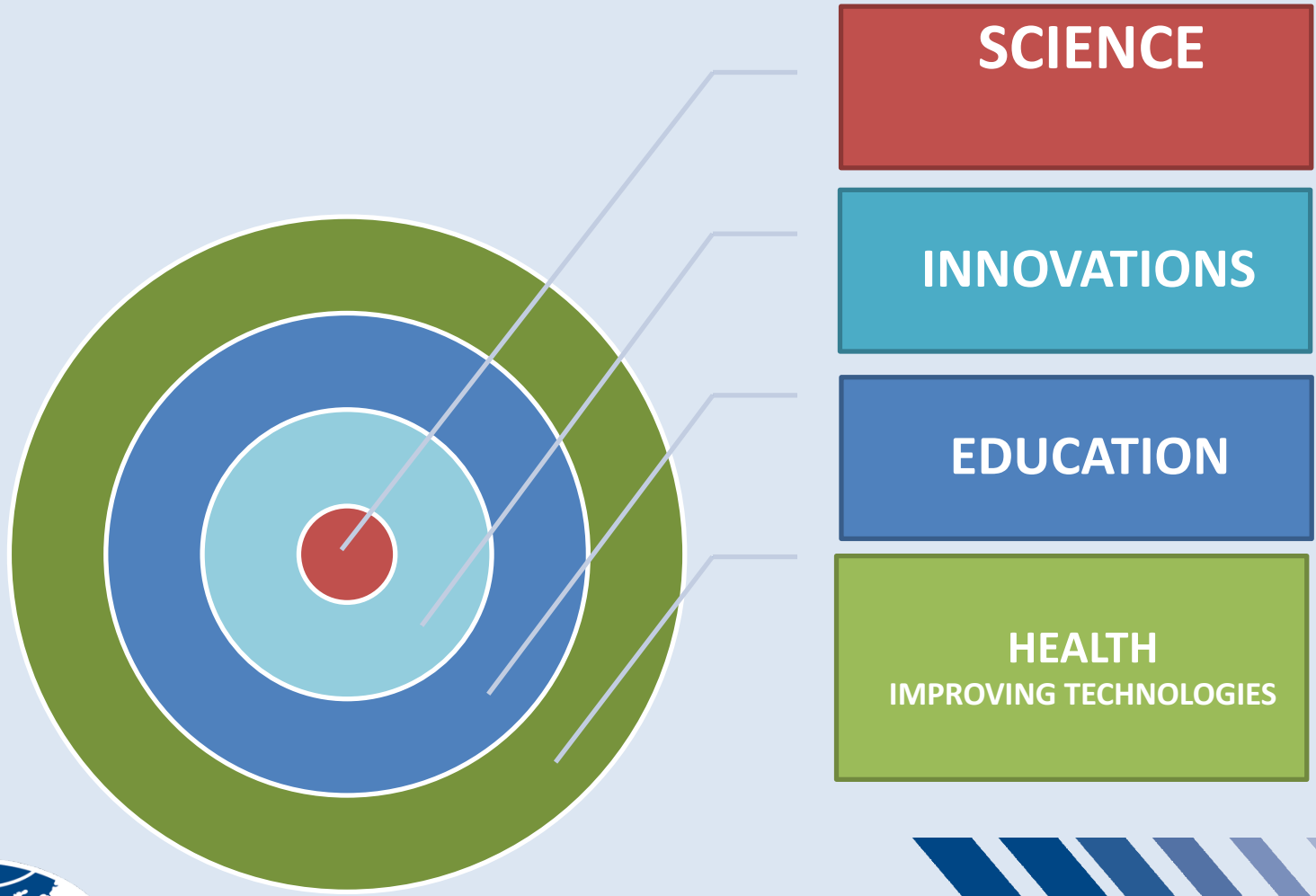
**Vladimir A. Zernov**

Professor, Dr. (Technical Sciences)

Rector of the Russian New University

(RosNOU)







**INTERNATIONAL  
RECOGNITION**

**EDUCATION OF  
COMPETITIVE HUMAN  
RESOURCES**

**EDUCATION OF FOREIGN  
STUDENTS**

**INTERNALIZATION OF  
THE UNIVERSITY**



# The University

6

*Russian New University (RosNOU) is one of the oldest private (non-state) educational institutions of higher professional education in Russia.*

*It was established in 1991 with the purpose of meeting personality needs in intellectual, cultural and moral development, as well as meeting social and economic needs in highly qualified specialists.*



# The University

7

*Today RosNOU is the leading non-state higher education institution in Russia. Its strategic goal and mission in the academic world is to create and implement higher vocational education programmes based on advanced achievements in science and technologies at the highest level of the best world universities.*



**30 000** Students Incl. **800** International Students

**3** Institutes

**9** Faculties & College

**28** Subsidiary Branches

**32** Departments

**40** Higher Professional Education Programs





## ***ENGINEERING AND NANOTECHNOLOGIES Latest Advanced Programmes and Courses***

- ❑ Electrical Power Engineering & Electric Engineering;
- ❑ Nanoengineering & Composite Materials;
- ❑ Ground Penetrating Radar & Telecommunication Systems;
- ❑ Mathematical Modeling of Distant Environmental Probing Systems.



*BUSINESS: LAW, ECONOMY AND CUSTOMS  
Latest Advanced Programmes and Courses*

- Russian Tax System and Taxation;*
- Customs Law (EAEC, BRICS);*



## *HUMANITIES*

### *Latest Advanced Programmes and Courses*

- Intercultural Communication;*
- Ecological Linguistics.*



## representatives



- IREG Observatory
- Greece-Russian Chamber of Commerce
- Costa-Rica Chamber of Commerce and tourism
- Representative of Iran Consulate in Moscow
- (Cultural division)

# IREG



# Active international partners

13

## UK:

OLC

Blackburn College

## FRANCE:

Ecole Internationale de Management de Paris

## MONTENEGRO:

Montenegro State University

## INDIA:

JIS Group

IIIT Allahabad

## IRAN:

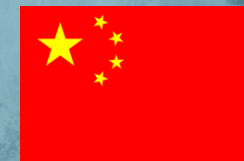
Univeresity Azad

Allameh Tabataba'i University

## CHINA:

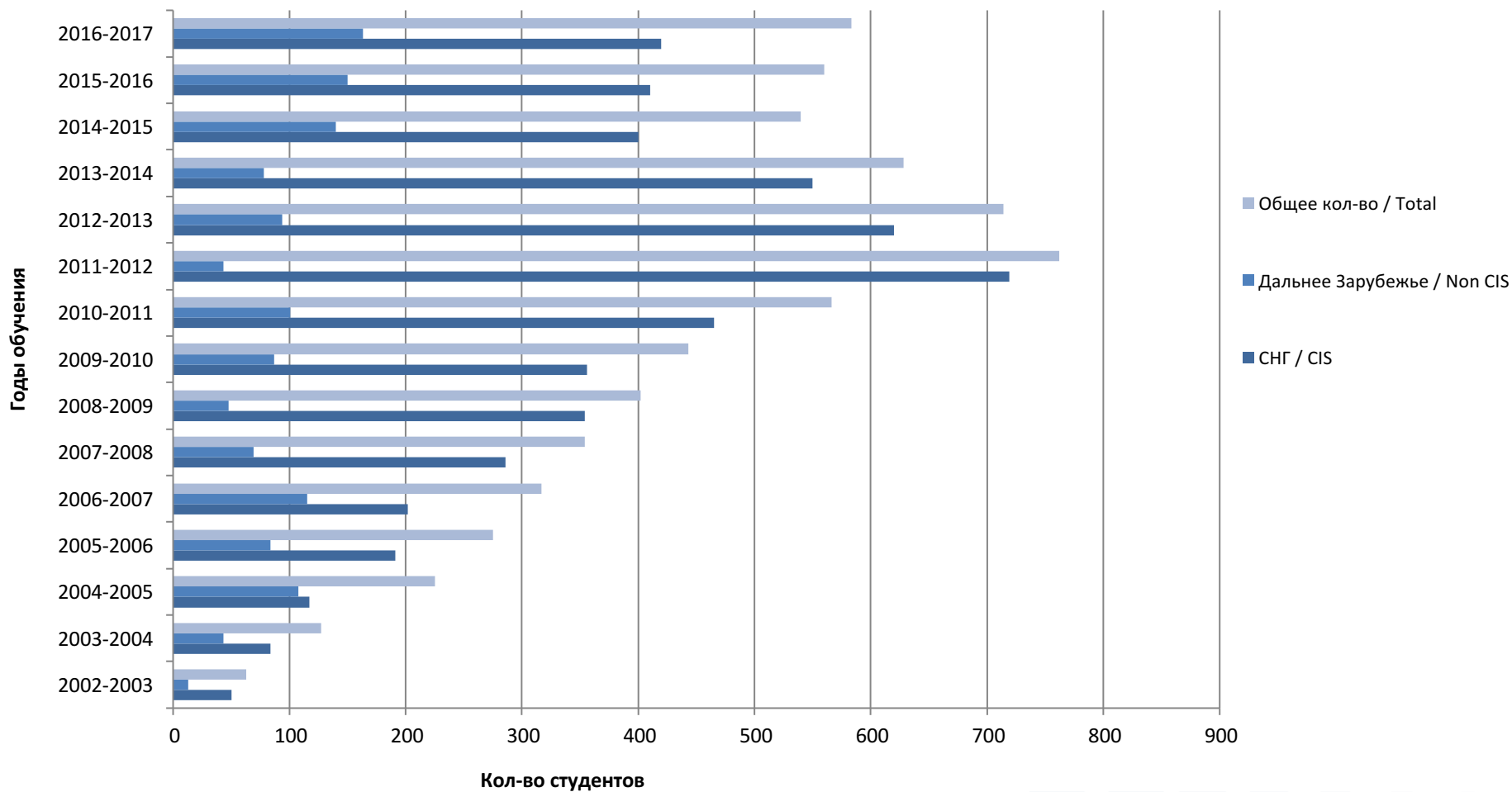
Sun Yat-sen University

Guangdong University of Foreign Studies

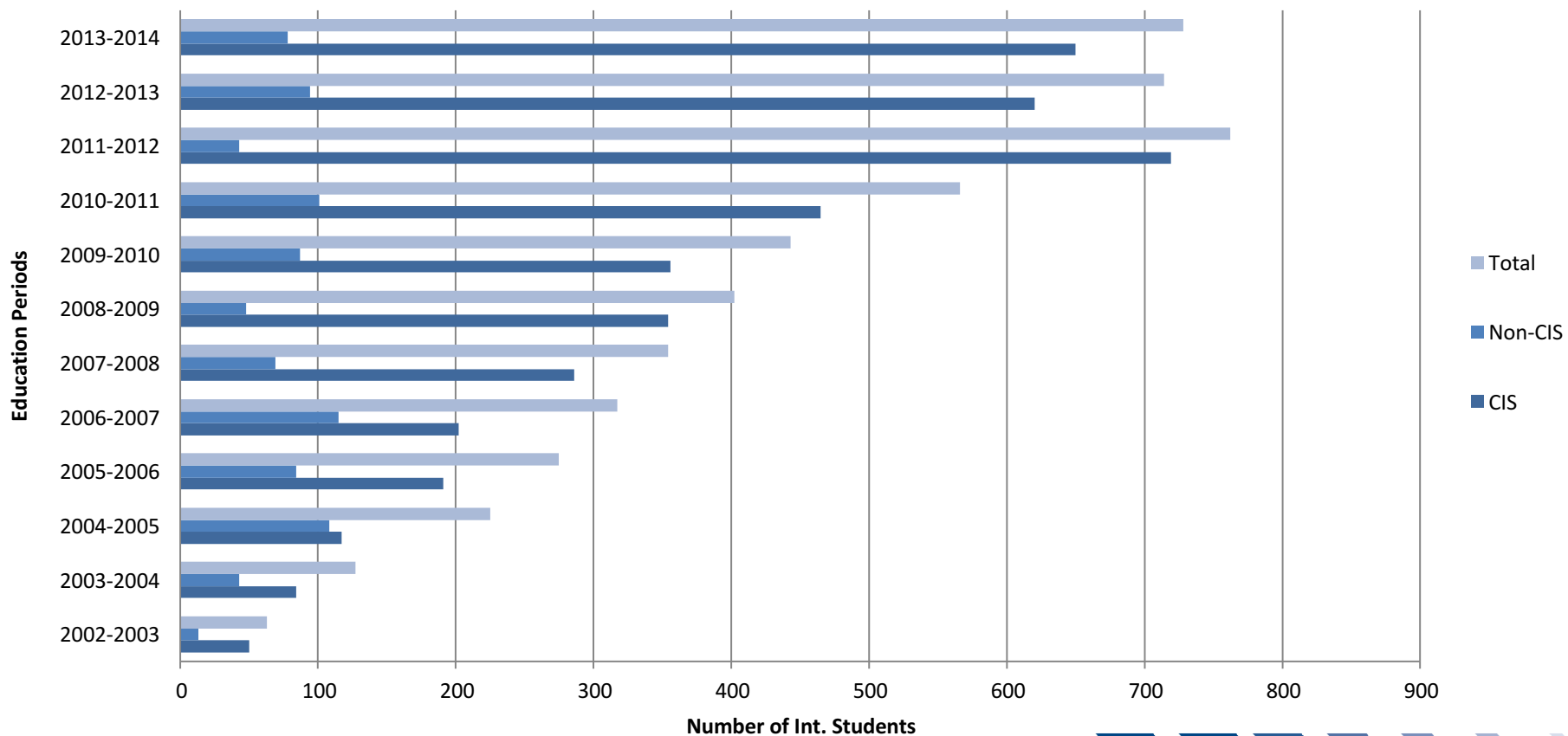


[www.rosnou.ru](http://www.rosnou.ru)

# Подготовка иностранных студентов в РосНОУ 14



## International Students in RosNOU



## Universities



**52 Agreements**

with Internatoinal Universities and Organisations  
from 22 countries







- **52** active international partners from **22** countries
- **800** international students from **35** countries
- **> 50** international trainees and exchange students per year
- **12** international education programs and projects
- International Chair in Communication



КАЧЕСТВЕННОЕ ОБРАЗОВАНИЕ - ПУТЬ К УСПЕШНОЙ КАРЬЕРЕ

## ОСОБЕННОСТИ ПРИЕМНОЙ КАМПАНИИ В 2015 ГОДУ

ЕГЭ

Все российские выпускники сдали



Вступительные испытания в форме тестирования

- выпускники техникумов и колледжей
- лица с образовательным уровнем ниже среднего, дети инвалидов, инвалиды
- иностранные граждане
- лица, прошедшие государственную аккредитацию по образовательным программам среднего общего образования на в форме ЕГЭ (в том числе в виде грантовой образовательной программы) в течение 5 года до дня вступления в силу договора и вступительных испытаний выпускниками



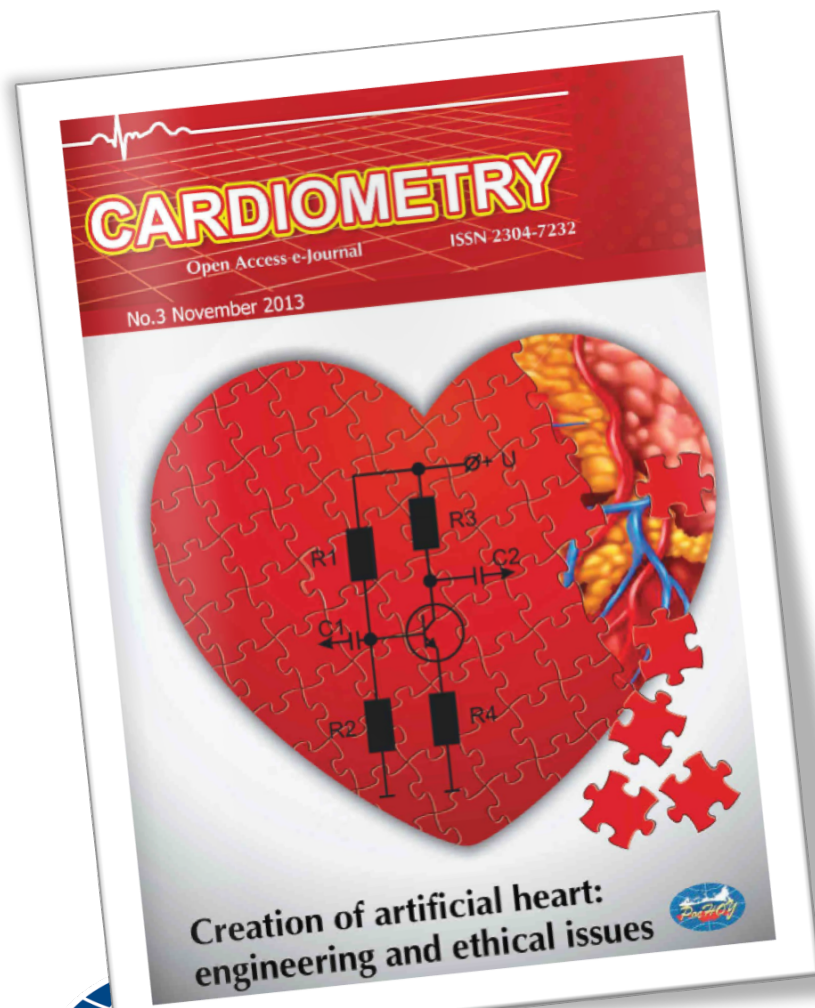




[www.rosnou.ru](http://www.rosnou.ru)

- 394 staff members are involved in scientific activities of RosNOU  
RosNOU has completed **68** scientific projects ordered by  
Federal and Regional State bodies.





## INTERNATIONAL JOURNAL CARDIOMETRY

The journal is read in **115** countries:  
US, Brazil, Netherlands, Canada, India, UK, etc.

<http://www.cardiometry.net/>

### EDITORIAL BOARD

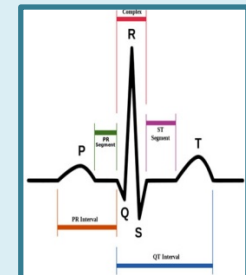
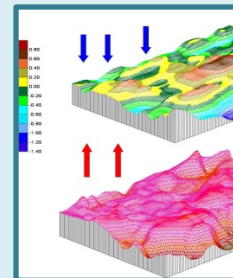
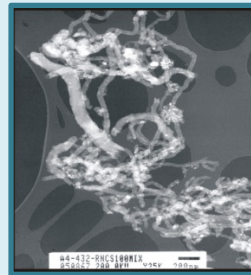
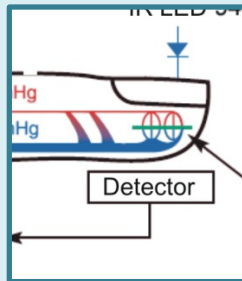
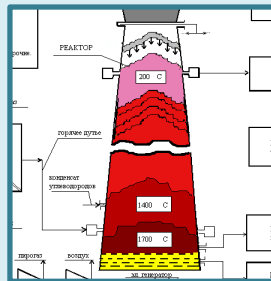
**Prof. Y. Guliaev (RU)**

**Prof. H.R. Horvitz (US)**

**Prof. P. Mansfield (GB)**



**16** independent applied science projects which have been implemented in the following spheres: **IT, chemistry, medicine, nanomaterials, energy conservation and alternative energy.**



# HEALTH IMPROVING TECHNOLOGIES

24



[www.rosnou.ru](http://www.rosnou.ru)









[www.rosnou.ru](http://www.rosnou.ru)



[www.rosnou.ru](http://www.rosnou.ru)



[www.rosnou.ru](http://www.rosnou.ru)







[www.rosnou.ru](http://www.rosnou.ru)











*Annual Student Exchange Mobility Process*  
**50-60 persons**

*Annual Faculty and Administrative Staff Exchange*  
**5-15 persons**

*Active country partners:*  
**China**  
**Italy**  
**Poland**  
**Iran**





## Exchange Program with the Sun Yat-sen University in the field of Russian-Chinese Language Studies and Tourism

*Duration: 1 or 2 Semesters*

*Capacity: 10 Students per Semester*

*Date of establishment: 2008*







# Students Life – Exchange Programs

40

ГУМАНИТАРНЫХ ТЕХНОЛОГИЙ

ИНФОРМАЦИЯ

ЖИЗНЬ ФАКУЛЬТЕТА





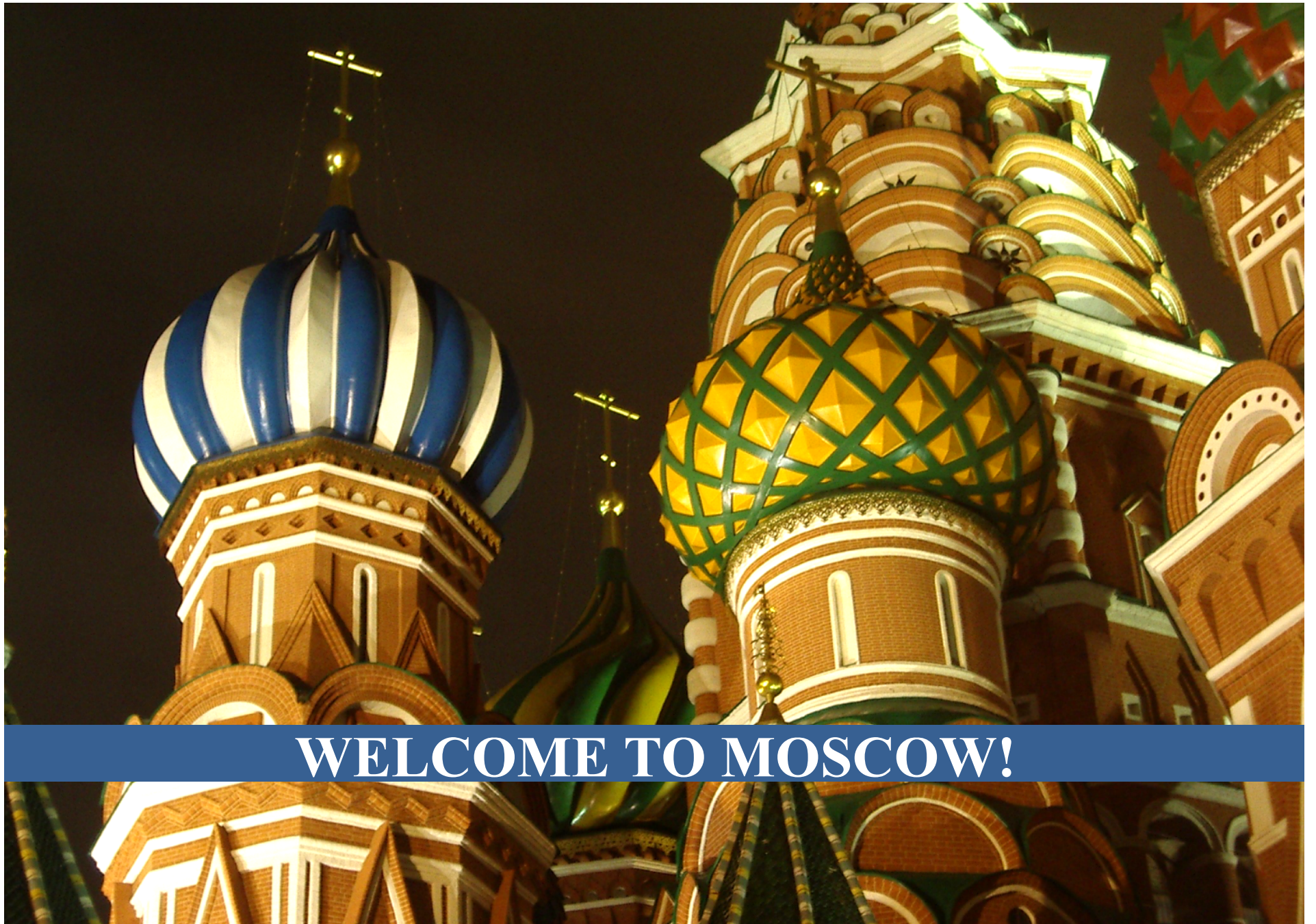
*The mission of RosNOU is to **create a modern research and education system in the private sector of education aimed at targeted training/retraining of specialists** for state and commercial organizations in high-tech sectors of the Russian economy. These **specialists should be capable of developing new technologies, products and services, and effectively applying scientific achievements to the creation of globally competitive, innovative equipment and technologies** which ensure Russia's national security, sustainable economy growth and the competitive performance of different sectors the Russian economy, enhancing their investment allure and innovation activity.*



СПАСИБО ЗА ВНИМАНИЕ!



THANKS FOR YOUR ATTENTION!



**WELCOME TO MOSCOW!**

Contacts: Tel.:+7 495 223 4845, E-mail: [ggabriel@rosnou.ru](mailto:ggabriel@rosnou.ru)